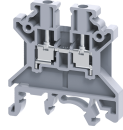


# CTS2.5UN



## 2.5 sq.mm, 5 mm thick Feed Through Terminal Block

2.5 sq.mm Feed Through Terminal Blocks are the most Versatile terminals for control, automation, instrumentation and power distribution applications. A specially designed flexible foot enables easy mounting and dismounting from the Din Rail with the help of a screw driver.

These Terminal Blocks have marker holding recesses to accept marking tags for circuit identification. Cross connection can be achieved with the aid of shorting links / sleeves & screws.

### TECHNICAL DATA

Rated Voltage	1000 V
Rated Current	24 A
Tightening Torque	0.4 Nm
Housing Material	Polymide
Product Function	Feed Through
Wire Entry Orientation	Side Entry
Mounting Possibility	DIN 32/DIN 35/DIN 35-15 Rail
Screw Size	M2.5
Operated by	Screwdriver
Rated Surge Voltage	8 KV
Pollution Degree	3

### CONNECTION DATA

Conductor Cross Section Stranded min.	0.2 mm <sup>2</sup>
Conductor Cross Section Stranded max.	2.5 mm <sup>2</sup>
Conductor Cross Section AWG/Kcmil min	22 AWG
Conductor Cross Section AWG/Kcmil max	12 AWG
Conductor Cross Section Stranded with Ferrule/Lug min	0.2 mm <sup>2</sup>
Conductor Cross Section Stranded with Ferrule/Lug max	2.5 mm <sup>2</sup>
2 Conductors with same Cross Section Stranded min	0.2 mm <sup>2</sup>
2 Conductor with same Cross Section Stranded max	1.5 mm <sup>2</sup>
Conductor Cross Section Solid min	0.2 mm <sup>2</sup>
Conductor Cross Section Solid max	4 mm <sup>2</sup>
2 Conductors with same Cross Section Stranded with TWIN Ferrule/Lug min	0.2 mm <sup>2</sup>
2 Conductor with same Cross Section Stranded with TWIN Ferrule/Lug max	1.5 mm <sup>2</sup>
Stripping Length	8 mm
Internal Cylindrical Guage	A3

### DIMENSIONS

Height with DIN 32 rail	51.1 mm
Height with DIN 35 x 15 mm rail	53.7 mm
Height with DIN 35 x 7.5 mm rail	46.2 mm
Length	43 mm
Width (Thickness)	5 mm

### ORDERING INFORMATION

CAT. NO.	DESCRIPTION	STD. PACK
CTS2.5UN	2.5 sq.mm Feed Through Terminal Block in Grey colour	100
CTS2.5UNBG	2.5 sq.mm Feed Through Terminal Block in Beige colour	100
CTS2.5UNBK	2.5 sq.mm Feed Through Terminal Block in Black colour	100
CTS2.5UNBU	2.5 sq.mm Feed Through Terminal Block in Blue colour	100
CTS2.5UNGN	2.5 sq.mm Feed Through Terminal Block in Green colour	100
CTS2.5UNO	2.5 sq.mm Feed Through Terminal Block in Orange colour	100
CTS2.5UNR	2.5 sq.mm Feed Through Terminal Block in Red colour	100
CTS2.5UNW	2.5 sq.mm Feed Through Terminal Block in White colour	100
CTS2.5UNY	2.5 sq.mm Feed Through Terminal Block in Yellow colour	100

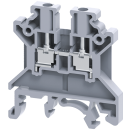
### APPROVALS



### NOTES

The Rated current is with the use of copper (Cu) conductor/Wire

CTS2.5UN



**connectwell**  
THE RIGHT CONNECTION

**RATINGS AS PER STANDARDS**

<b>STANDARDS</b>	<b>UL 1059</b>	<b>CSA C.22.2 No:158</b>	<b>DIN EN60947-7-1</b>
Approvals	UL	CSA	VDE
Conductor Cross Section Stranded min.	22 AWG	22 AWG	0.5 mm <sup>2</sup>
Conductor Cross Section Stranded max.	12 AWG	12 AWG	2.5 mm <sup>2</sup>
Rated Voltage	600 V	600 V	800 V
Rated Current	25 A	25 A	24 A
Tightening Torque	7 lb-in	7 lb-in	0.4 Nm
<b>STANDARDS</b>	<b>IEC/EN60947-7-1</b>	<b>EN60079-7</b>	<b>IEC 60079-0 &amp; IEC 60079-7</b>
Approvals	CE	ATEX	ATEX-IECex
Conductor Cross Section Stranded min.	0.2 mm <sup>2</sup>	0.5 mm <sup>2</sup>	0.5 mm <sup>2</sup>
Conductor Cross Section Stranded max.	2.5 mm <sup>2</sup>	2.5 mm <sup>2</sup>	2.5 mm <sup>2</sup>
Rated Voltage	1000 V	690 V	690 V
Rated Current	24 A	21 A	21 A
Tightening Torque	0.4 Nm	0.4 Nm	0.4 Nm
Operating Temperature Range		-60 to +110 °C	-60 to +110 °C