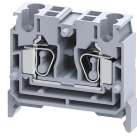


# CXCP2.5/4



**connectwell**  
THE RIGHT CONNECTION

## 2.5 sq.mm Spring Clamp Feed Through compact Terminal Blocks

The Spring Clamp is operated by using a screw driver to provide an access to the wire through an opening in the spring clamp. The inserted wire gets clamped on to the current bar when the screw driver is removed.

### TECHNICAL DATA

Rated Voltage	1000 V
Rated Current	24 A
Housing Material	Polymide
Product Function	Feed Through
Wire Entry Orientation	Top
Mounting Possibility	DIN 35/DIN 35-15 Rail
Operated by	Screw Driver
Rated Surge Voltage	8 KV
Pollution Degree	3

### CONNECTION DATA

Conductor Cross Section Stranded min.	0.2 mm <sup>2</sup>
Conductor Cross Section Stranded max.	2.5 mm <sup>2</sup>
Conductor Cross Section AWG/Kcmil min	24 AWG
Conductor Cross Section AWG/Kcmil max	12 AWG
Conductor Cross Section Stranded with Ferrule/Lug min	0.2 mm <sup>2</sup>
Conductor Cross Section Stranded with Ferrule/Lug max	2.5 mm <sup>2</sup>
2 Conductors with same Cross Section Stranded min	0.2 mm <sup>2</sup>
2 Conductor with same Cross Section Stranded max	1.5 mm <sup>2</sup>
Conductor Cross Section Solid min	0.2 mm <sup>2</sup>
Conductor Cross Section Solid max	4 mm <sup>2</sup>
Stripping Length	11 mm

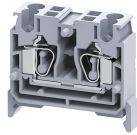
### DIMENSIONS

Height	33 mm
Height with DIN 35 x 15 mm rail	44 mm
Height with DIN 35 x 7.5 mm rail	36.5 mm
Length	38 mm
Width (Thickness)	10 mm

### ORDERING INFORMATION

CAT. NO.	DESCRIPTION	STD. PACK
CXCP2.5/4	2.5 sq.mm Feed Through Spring Clamp Terminal Block in Grey colour	50

CXCP2.5/4



**connectwell**  
THE RIGHT CONNECTION

**APPROVALS**



**NOTES**

The Rated current is with the use of copper (Cu) conductor/Wire

**RATINGS AS PER STANDARDS**

STANDARDS	UL 1059	IEC/EN60947-7-1
Approvals	UL	CE
Conductor Cross Section Stranded min.	24 AWG	0.2 mm <sup>2</sup>
Conductor Cross Section Stranded max.	12 AWG	2.5 mm <sup>2</sup>
Rated Voltage	600 V	1000 V
Rated Current	20 A	24 A