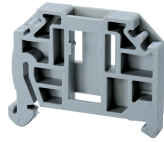


CA103



connectwell
THE RIGHT CONNECTION

End Clamp

End Clamps help to secure the entire Terminal Block assembly on the DIN Rail. End Clamps should be fixed on both sides of the Terminal Block assemblies. These End Clamps are designed to fix on DIN 32, DIN 35 and DIN 15 rails. The Polyamide series End Clamps have suitable recesses to accommodate a group marker holder and marking tags for group identification.

PRODUCT SPECIFICATION

| | |
|-------------------|-------|
| Height | 34 mm |
| Length | 41 mm |
| Width (Thickness) | 6 mm |

ORDERING INFORMATION

| CAT. NO. | DESCRIPTION | STD. PACK |
|----------|---|-----------|
| CA103 | EndClamp in Polyamide suitable for Din 35/Din 35-15 rails | 50 |

NOTES

- 1) Material - Polyamide 6,6
- 2) Flammability - V0
- 3) Ambient Temperature -60 to 110 Deg C