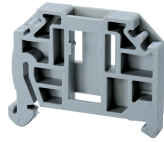


CA103



**connectwell**  
THE RIGHT CONNECTION

### End Clamp

End Clamps help to secure the entire Terminal Block assembly on the DIN Rail. End Clamps should be fixed on both sides of the Terminal Block assemblies. These End Clamps are designed to fix on DIN 32, DIN 35 and DIN 15 rails. The Polyamide series End Clamps have suitable recesses to accommodate a group marker holder and marking tags for group identification.

#### PRODUCT SPECIFICATION

Height	34 mm
Length	41 mm
Width (Thickness)	6 mm

#### ORDERING INFORMATION

CAT. NO.	DESCRIPTION	STD. PACK
CA103	EndClamp in Polyamide suitable for Din 35/Din 35-15 rails	50

#### NOTES

- 1) Material - Polyamide 6,6
- 2) Flammability - V0
- 3) Ambient Temperature -60 to 110 Deg C