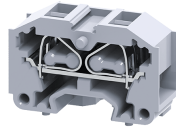


# CM2.5S2



**connectwell**  
THE RIGHT CONNECTION

2.5 sq. mm spring clamp Panel Mount Terminal Blocks.

A perfect solution for extremely compact wiring applications, these terminal block are modular and can be stacked to form multi-pole terminal block assemblies. CM series terminal Block have a side sere entry configuration.

### TECHNICAL DATA

Rated Voltage	500 V
Rated Current	24 A
Housing Material	Polymide
Product Function	Feed Through
Wire Entry Orientation	Side
Mounting Possibility	Free Floating / Surface / Panel
Rated Surge Voltage	6 KV
Pollution Degree	3

### CONNECTION DATA

Conductor Cross Section Stranded min.	0.2 mm <sup>2</sup>
Conductor Cross Section Stranded max.	2.5 mm <sup>2</sup>
Conductor Cross Section AWG/Kcmil min	22 AWG
Conductor Cross Section AWG/Kcmil max	12 AWG
Conductor Cross Section Stranded with Ferrule/Lug min	0.2 mm <sup>2</sup>
Conductor Cross Section Stranded with Ferrule/Lug max	2.5 mm <sup>2</sup>
2 Conductors with same Cross Section Stranded min	0.2 mm <sup>2</sup>
2 Conductor with same Cross Section Stranded max	1.5 mm <sup>2</sup>
Conductor Cross Section Solid min	0.2 mm <sup>2</sup>
Conductor Cross Section Solid max	4 mm <sup>2</sup>
Stripping Length	8 mm

### DIMENSIONS

Height	20 mm
Length	30 mm
Width (Thickness)	10 mm

### ORDERING INFORMATION

CAT. NO.	DESCRIPTION	STD. PACK
CM2.5S2	2.5 sqmm Panel Mount Spring ClampTerminal Block in Grey colour.	100
CM2.5S2BK	2.5 sqmm Panel Mount Spring ClampTerminal Block in Black colour.	100
CM2.5S2BU	2.5 sqmm Panel Mount Spring ClampTerminal Block in Blue colour.	100
CM2.5S2GN	2.5 sqmm Panel Mount Spring ClampTerminal Block in Green colour.	100
CM2.5S2R	2.5 sqmm Panel Mount Spring ClampTerminal Block in Red colour.	100
CM2.5S2Y	2.5 sqmm Panel Mount Spring ClampTerminal Block in Yellow colour.	100

### ORDERING INFORMATION

CAT. NO.	DESCRIPTION	STD. PACK
CM2.5S2YG	2.5 sqmm Panel Mount Spring ClampTerminal Block in Yellow-Green colour.	100

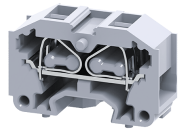
### ACCESSORIES

IMAGES	CAT. NO.	DESCRIPTION	STD. PACK
	EPCM2.5S	End Plate in Grey Colour	50
	CA509/K7.5	Blank Marking Tag	100
	SCS0.5/3	Electricians Screwdriver for slotted screws	10

### APPROVALS



CM2.5S2



**connectwell**  
THE RIGHT CONNECTION

**RATINGS AS PER STANDARDS**

<b>STANDARDS</b>	<b>UL 1059</b>	<b>CSA C.22.2 No:158</b>	<b>IEC/EN60947-7-1</b>
Approvals	UL	CSA	CE
Conductor Cross Section Stranded min.	22 AWG	22 AWG	0.2 mm <sup>2</sup>
Conductor Cross Section Stranded max.	12 AWG	12 AWG	2.5 mm <sup>2</sup>
Rated Voltage	300 V	300 V	500 V
Rated Current	20 A	20 A	24 A