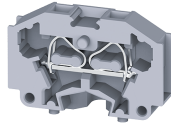


CM1.5S



connectwell
THE RIGHT CONNECTION

1.5 sq. mm spring clamp Panel Mount Terminal Blocks.

A perfect solution for extremely compact wiring applications, these terminal block are modular and can be stacked to form multi-pole terminal block assemblies. CM series terminal Block have a side sire entry configuration.

TECHNICAL DATA

Rated Voltage	500 V
Rated Current	17 A
Housing Material	Polymide
Product Function	Feed Through
Wire Entry Orientation	Side Entry
Mounting Possibility	Free Floating / Surface / Panel
Operated by	Screw Driver
Rated Surge Voltage	6 KV
Pollution Degree	3

CONNECTION DATA

Conductor Cross Section Stranded min.	0.2 mm ²
Conductor Cross Section Stranded max.	1.5 mm ²
Conductor Cross Section AWG/Kcmil min	24 AWG
Conductor Cross Section AWG/Kcmil max	16 AWG
Conductor Cross Section Stranded with Ferrule/Lug min	0.2 mm ²
Conductor Cross Section Stranded with Ferrule/Lug max	1.5 mm ²
2 Conductors with same Cross Section Stranded min	0.2 mm ²
2 Conductor with same Cross Section Stranded max	0.5 mm ²
Conductor Cross Section Solid min	0.2 mm ²
Conductor Cross Section Solid max	1.5 mm ²
Stripping Length	8 mm

DIMENSIONS

Height	18 mm
Length	26.5 mm
Width (Thickness)	5 mm




ORDERING INFORMATION

CAT. NO.	DESCRIPTION	STD. PACK
CM1.5S	1.5 sqmm Panel Mount Spring Clamp Terminal Block in Grey colour.	100
CM1.5SBK	1.5 sqmm Panel Mount Spring Clamp Terminal Block in Black colour.	100
CM1.5SBU	1.5 sqmm Panel Mount Spring Clamp Terminal Block in Blue colour.	100
CM1.5SGN	1.5 sqmm Panel Mount Spring Clamp Terminal Block in Green colour.	100
CM1.5SR	1.5 sqmm Panel Mount Spring Clamp Terminal Block in Red colour.	100

ORDERING INFORMATION

CAT. NO.	DESCRIPTION	STD. PACK
CM1.5SY	1.5 sqmm Panel Mount Spring Clamp Terminal Block in Yellow colour.	100
CM1.5SYG	1.5 sqmm Panel Mount Spring Clamp Terminal Block in Yellow-Green colour.	100
CM1.5SO	1.5 sqmm Panel Mount Spring Clamp Terminal Block in Orange colour.	100

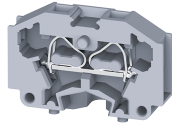
ACCESSORIES

IMAGES	CAT. NO.	DESCRIPTION	STD. PACK
	EPCM1.5S	End Plate in Grey Colour	50
	CA509/K4	Blank Marking Tag	100
	SCS0.5/3	Electricians Screwdriver for slotted screws	10

APPROVALS



CM1.5S



connectwell
THE RIGHT CONNECTION

RATINGS AS PER STANDARDS

STANDARDS	UL 1059	CSA C.22.2 No:158	IEC/EN60947-7-1
Approvals	UL	CSA	CE
Conductor Cross Section Stranded min.	24 AWG	24 AWG	0.2 mm ²
Conductor Cross Section Stranded max.	16 AWG	16 AWG	1.5 mm ²
Rated Voltage	300 V	300 V	500 V
Rated Current	10 A	10 A	17 A