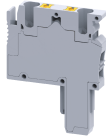


CP2.5PD



connectwell
THE RIGHT CONNECTION

CP2.5PD - 2.5 mm² 1 POLE DOUBLE CONNECTION PLUG

Connectwell pluggable series Terminal Blocks are an excellent solution for creating wire harnesses which ease field wire connections.

PRODUCT SPECIFICATION

Conductor Cross Section in AWG	12 AWG
Conductor Cross Section in sq. mm	2.5 mm ²
Height	42 mm
Length	33 mm
Rated Current	24 A
Rated Voltage	500 V
Suitable For	CX2.5/1B, CXG2.5/1B & CX2.5SN
Width (Thickness)	5 mm

ORDERING INFORMATION

CAT. NO.	DESCRIPTION	STD. PACK
CP2.5PD	CP2.5PD - 2.5 mm ² 1 POLE DOUBLE CONNECTION PLUG	100
CP2.5PDL	CP2.5PDL - 2.5 mm ² 1 POLE DOUBLE CONNECTION END PLUG	100

SUITABLE FOR

CX2.5/1B	2.5 sq.mm pluggable feed through Spring Clamp Terminal Block
CXG2.5/1B	2.5 sq.mm Ground/Earth Spring Clamp Terminal Blocks
CX2.5SN	2.5 sq.mm 1 pole socket spring clamp terminal block.