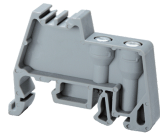


CA702



connectwell
THE RIGHT CONNECTION

End Clamp

End Clamps helps to secure the entire Terminal Block assembly on the Din Rail. End Clamps should be fixed on both sides of the Terminal Block assemblies.

PRODUCT SPECIFICATION

Length	44 mm
Width (Thickness)	9 mm

ORDERING INFORMATION

CAT. NO.	DESCRIPTION	STD. PACK
CA702	End Clamp in Polyamide 66 suitable for Din 32 / Din 35 / Din 35-15 Rails	50

NOTES

CA509/G1 marking tag can be used as an accessory.