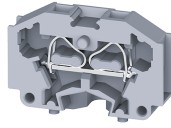


CM1.5S



connectwell
THE RIGHT CONNECTION

1.5 sq. mm spring clamp Panel Mount Terminal Blocks.

A perfect solution for extremely compact wiring applications, these terminal block are modular and can be stacked to form multi-pole terminal block assemblies. CM series terminal Block have a side sire entry configuration.

TECHNICAL DATA

| | |
|------------------------|---------------------------------|
| Rated Voltage | 500 V |
| Rated Current | 17 A |
| Housing Material | Polymide |
| Product Function | Feed Through |
| Wire Entry Orientation | Side Entry |
| Mounting Possibility | Free Floating / Surface / Panel |
| Operated by | Screw Driver |
| Rated Surge Voltage | 6 KV |
| Pollution Degree | 3 |

CONNECTION DATA

| | |
|---|---------------------|
| Conductor Cross Section Stranded min. | 0.2 mm ² |
| Conductor Cross Section Stranded max. | 1.5 mm ² |
| Conductor Cross Section AWG/Kcmil min | 24 AWG |
| Conductor Cross Section AWG/Kcmil max | 16 AWG |
| Conductor Cross Section Stranded with Ferrule/Lug min | 0.2 mm ² |
| Conductor Cross Section Stranded with Ferrule/Lug max | 1.5 mm ² |
| 2 Conductors with same Cross Section Stranded min | 0.2 mm ² |
| 2 Conductor with same Cross Section Stranded max | 0.5 mm ² |
| Conductor Cross Section Solid min | 0.2 mm ² |
| Conductor Cross Section Solid max | 1.5 mm ² |
| Stripping Length | 8 mm |

DIMENSIONS

| | |
|-------------------|---------|
| Height | 18 mm |
| Length | 26.5 mm |
| Width (Thickness) | 5 mm |




ORDERING INFORMATION

| CAT. NO. | DESCRIPTION | STD. PACK |
|----------|---|-----------|
| CM1.5S | 1.5 sqmm Panel Mount Spring Clamp Terminal Block in Grey colour. | 100 |
| CM1.5SBK | 1.5 sqmm Panel Mount Spring Clamp Terminal Block in Black colour. | 100 |
| CM1.5SBU | 1.5 sqmm Panel Mount Spring Clamp Terminal Block in Blue colour. | 100 |
| CM1.5SGN | 1.5 sqmm Panel Mount Spring Clamp Terminal Block in Green colour. | 100 |
| CM1.5SR | 1.5 sqmm Panel Mount Spring Clamp Terminal Block in Red colour. | 100 |

ORDERING INFORMATION

| CAT. NO. | DESCRIPTION | STD. PACK |
|----------|--|-----------|
| CM1.5SY | 1.5 sqmm Panel Mount Spring Clamp Terminal Block in Yellow colour. | 100 |
| CM1.5SYG | 1.5 sqmm Panel Mount Spring Clamp Terminal Block in Yellow-Green colour. | 100 |
| CM1.5SO | 1.5 sqmm Panel Mount Spring Clamp Terminal Block in Orange colour. | 100 |

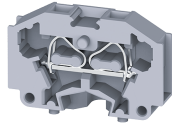
ACCESSORIES

| IMAGES | CAT. NO. | DESCRIPTION | STD. PACK |
|---|----------|---|-----------|
|  | EPCM1.5S | End Plate in Grey Colour | 50 |
|  | CA509/K4 | Blank Marking Tag | 100 |
|  | SCS0.5/3 | Electricians Screwdriver for slotted screws | 10 |

APPROVALS



CM1.5S



connectwell
THE RIGHT CONNECTION

RATINGS AS PER STANDARDS

| STANDARDS | UL 1059 | CSA C.22.2 No:158 | IEC/EN60947-7-1 |
|---------------------------------------|----------------|--------------------------|------------------------|
| Approvals | UL | CSA | CE |
| Conductor Cross Section Stranded min. | 24 AWG | 24 AWG | 0.2 mm ² |
| Conductor Cross Section Stranded max. | 16 AWG | 16 AWG | 1.5 mm ² |
| Rated Voltage | 300 V | 300 V | 500 V |
| Rated Current | 10 A | 10 A | 17 A |